



VIEWMATE™

Ultrasound System v9.1



EXCEPTIONAL CARDIAC IMAGING IN A COMPACT CONSOLE



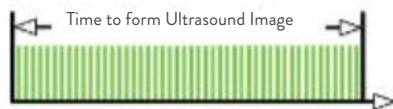
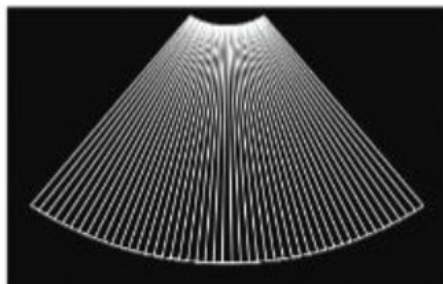
Image of a device crossing the septum into the left atrium (post-transseptal puncture). Image generated from the ViewFlex™ Xtra ICE catheter.

VISUALIZE CARDIAC STRUCTURES, BLOOD FLOW AND DEVICES WITHIN THE HEART*

Outstanding image quality provides clear visualization of cardiac anatomy and devices.¹

- Enhanced far-field resolution enables assessment of distal structures such as the left pulmonary veins and left ventricle.²
- Powered by the unique ZONARE Zone Sonography⁺ technology, delivering software-based image acquisition:

CONVENTIONAL



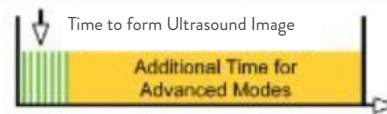
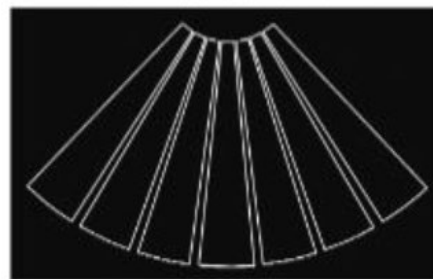
Line-by-line data acquisition

Hardware-based

Data discarded

Tradeoff between image quality and portability

ZONE SONOGRAPHY™ ‡



Large zone acquisition

10X faster

Software based

Cost-effective Upgrades

Data retained

Both premium image quality and portability

*When paired with a ViewFlex™ Xtra ICE catheter.

GAIN WORKFLOW ADVANTAGES WITH ENHANCED FUNCTIONALITY¹

- Rapid boot-up time enables quick start to imaging.
- 1.5-hour battery pack eliminates the need to power down when moving the system.
- Software-based architecture allows for easy upgrades.
- Networking compatibility with most hospital PACS servers.
- Ergonomically designed control panel to enable easy control and case annotation.



STREAMLINE PROCEDURES SINGLE-HANDEDLY¹

The ViewFlex™ Xtra Intracardiac Echocardiography (ICE) catheter provides seamless maneuverability, allowing physicians to focus more on the procedure and less on catheter manipulation to enhance workflow efficiency.

- Ergonomic handle with auto-lock steering allows for single-handed operation, which can minimize catheter repositioning.¹
- Extended catheter reach on the distal curve assists in right ventricular access.²
- Four-way tip deflection enables optimal viewing planes.
- Integrated connector streamlines setup by eliminating the need for a sterile sleeve.

INCREASED PRODUCTIVITY WITH A FULLY FEATURED SYSTEM

The ViewMate™ ultrasound system features comprehensive imaging capabilities, which can eliminate the need for additional imaging equipment to be transported to the lab.¹

- Multi-transducer port connects three transducers simultaneously, which allows for quick selection of transducer based on clinical need (ICE, Transthoracic, Transesophageal and Vascular).
- Choose multiple imaging modes (2-D, M-Mode, Pulsed Wave, Continuous Wave, Color Doppler, Tissue Doppler Imaging**).

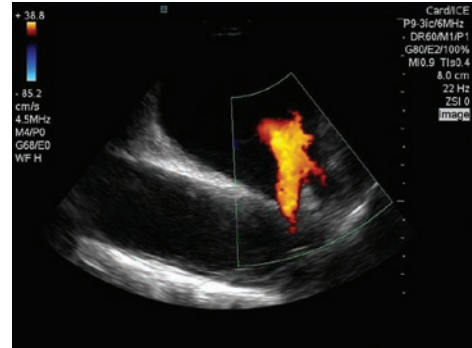
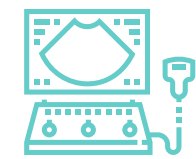


Image of the left pulmonary veins (with blood flow from veins as denoted in orange) as viewed from the right atrium using the ViewFlex™ Xtra ICE catheter.



ONLINE
VIRTUAL SCAN



IQ SCAN DATA
SETTINGS



OFFLINE
RESEARCH

BEYOND THE PROCEDURE

- Total Recall Imaging™[‡] provides a post-processing feature enabling the user to optimize images retrospectively, designed to eliminate the need for repeat scanning to capture a better image.
- Provides a method to organize interesting cases and images for training purposes and recognition of anatomy and pathology.

**Not available with ICE.

CYBERSECURITY MEASURES FOR VIEWMATE™ ULTRASOUND SYSTEM

CYBERSECURITY IS AT THE HEART OF OUR PRODUCT DESIGN.

Protecting patient and hospital data is of the utmost importance. As a result of our data protection-by-design approach to product development, in conjunction with the results of the in-depth assessment conducted, we have implemented the following security controls in ViewMate™ Ultrasound System:



APPLICATION AUDIT LOGS: The application logs select security events including, but not limited to, login attempts, user history and deactivation, and user changes to data and parameter values. Audit logs are exportable using FTP or USB if not connected.



PROTECTION FROM UNWANTED SOFTWARE: ViewMate™ Ultrasound System has been designed using robust OS Hardening practices. ViewMate™ Ultrasound System does not support auto run from removable media.



NETWORK SECURITY: ViewMate™ Ultrasound System supports Secure DICOM over TLS 1.2, support for VPN services and an application firewall configured to block all unnecessary ports not in use.



DATA DELETION: ViewMate™ Ultrasound System supports secure data wipe and limits on the number of cases retained in an archive. Case retention policy is configurable to comply with customer practices.



ROBUST USER ACCOUNT MANAGEMENT: In addition to providing strong password protection, ViewMate™ Ultrasound System also supports password complexity and account lockout to comply with customer account management policies. The system can also integrate with customer managed Lightweight Directory Access Protocol (LDAP) or support stand-alone Role Based Access Controls (RBAC).



ENCRYPTION/TRANSIT DATA PROTECTION: ViewMate™ Ultrasound System hard drive support AES-256 bit data encryption to protect data at rest. ViewMate™ Ultrasound System supports TLS1.2 and Secure DICOM to protect data in transit.



ANTI-VIRUS-M-SECURE ANTI-VIRUS UTILIZES CLAM AV ANTI-VIRUS DATABASE to prevent, detect and remove all potential threats to the systems hard drive.

VIEWMATE™ ULTRASOUND SYSTEM TRANSDUCER FAMILY



L8-3 (LINEAR)

Applications: Nerve, Pediatric Hips, Peripheral Vascular

FOV: 38 mm



L14-5SP (LINEAR)

Applications: Interventional, Intraoperative, Neonatal, Ocular, Pediatrics, Superficial Vascular, Vein Mapping

FOV: 26 mm



P4-1C (SECTOR)

Applications: Abdominal Vascular, CEUS, Deep Abdominal, Echocardiography, OB/GYN, Renal, Trauma (FAST Exams), Transcranial Imaging/Doppler

FOV: 84°



A2 (CONTINUOUS WAVE)

Applications: Adult, Adolescent Echocardiography



P8-3 (TEE)

Applications: Adult Transesophageal Echocardiography

FOV: 90 mm



P8-3M (TEE)

Applications: Adult and Pediatric Transesophageal Echocardiography

FOV: 90 mm



P7-C (SECTOR)

Applications: Abdominal Vascular, CEUS, Deep Abdominal, Echocardiography, OB/GYN, Renal, Tr

VIEWFLEX™ XTRA ICE CATHETER SPECIFICATIONS

Feature	Specification
Catheter size	9 F
Introducer size	10 F
Insertable length	90 cm
Tip deflection	Anterior/Posterior, Left/Right ± 120 degree flexion
Transducer type	64 element phased array
Viewing sector	80 degrees

VIEWMATE™ ULTRASOUND CONSOLE SPECIFICATIONS

Feature	Specification
Dimensions	62 H x 20.1 W x 28.2 D (in) 157 H x 51 W x 72 D (cm)
Weight	147 lb (66 kg)
Display	<ul style="list-style-type: none"> • 19" (48 cm) high resolution color LCD mounted on articulating arm • Height adjustment via console adjustment as well as articulating arm • 30° backward tilt and full 90° forward tilt into secure transport position • 1280 x 1024 pixel resolution • Dynamic feedback sensor for controlling backlight stability and enabling fast warm-up
Architecture	<ul style="list-style-type: none"> • > 100,000 dynamic channels per frame • Frame rate: > 1,000 fps • Boot time: < 70 seconds
Site Requirements	<ul style="list-style-type: none"> • 100-240VAC, 50-60Hz • 180W (616 BTU/hr) with no peripherals • 470W (1608 BTU/hr) with peripherals • Ambient air temperature of 0 – 35° Celsius • Ambient relative humidity of up to 80%, non-condensing • Ingress Protection Rating: IP20
Video Output	<ul style="list-style-type: none"> • HDMI Connection, supporting plug in play technology to duplicate display • Multiple formats (image only or full screen)
Networking Capabilities	<ul style="list-style-type: none"> • Ethernet (10/100 Base T) • Wireless capable via optional bridge • Integrate-able with most hospital PACS and worklist
DICOM Options	<ul style="list-style-type: none"> • Verify, print, store service Class • Basic modality worklist query • Queue for mobile exams with autosend feature upon network connection • Exam push to DICOM from on-board archive • Variable compression settings

1. Abbott. Data on File. Report 90094426.

2. Abbott. Data on File. Report 90089784.

Abbott

The Corporate Village, Da Vincilaan 11 Box F1, 1935 Zaventem, Belgium, Tel: +32 2 774 68 11
Cardiovascular.abbott

Brief Summary: Prior to using these devices, please review the Instructions for Use for a complete listing of indications, contraindications, warnings, precautions, potential adverse events and directions for use.

™ Indicates a trademark of the Abbott group of companies.

© 2021 Abbott. All Rights Reserved.

MAT-2111343 v1.0 | Item intended for EMEA Audiences.



